



PORSGRUNN KOMMUNE

# WELCOME TO PORSGRUNN!

16th. and 17th. Of June, 2014



## PEOPLE

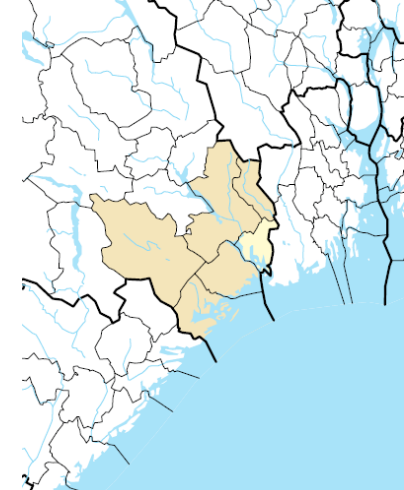
Personal Learning Environments & Lifelong Learning

# Porsgrunn City Hall built in 1905



The City Hall arena is a place for culture and enjoyable meetings for the inhabitants





# Key Figures

**35 395 inhabitants**  
– Growth in population

**Municipal area: 163,2 km<sup>2</sup>**  
– Neighbours: Skien, Siljan, Bamble and Larvik municipalities  
– Common living- and labour market

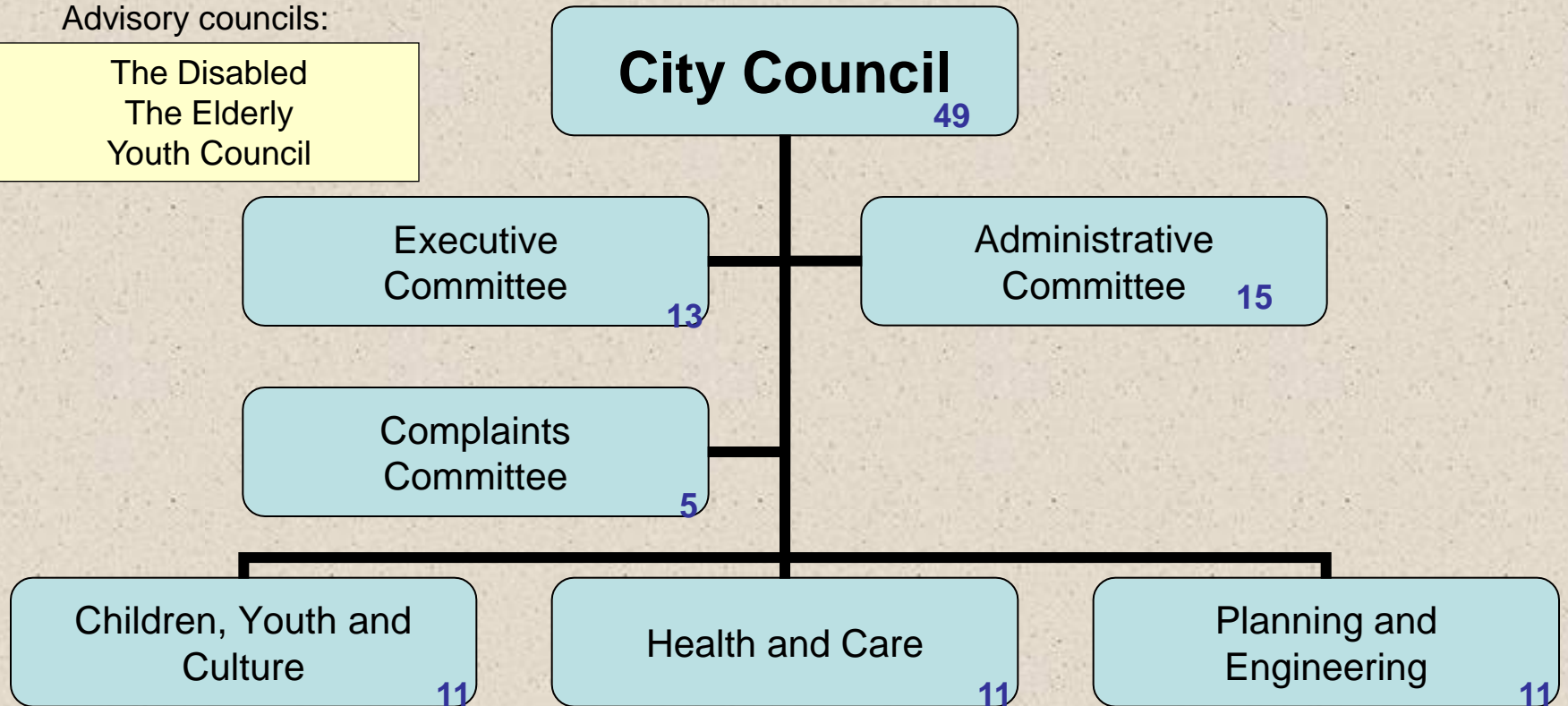
**-4 % unemployment in Porsgrunn**



# Political Organization

Advisory councils:

The Disabled  
The Elderly  
Youth Council



# Administrative Organisation Chart

## Chief Executive Officer (CEO)

Director of  
Planning and  
Supportive  
Services

Director of  
Health and  
Welfare  
Services

Director of  
Care Services

Director of  
Educational  
Services

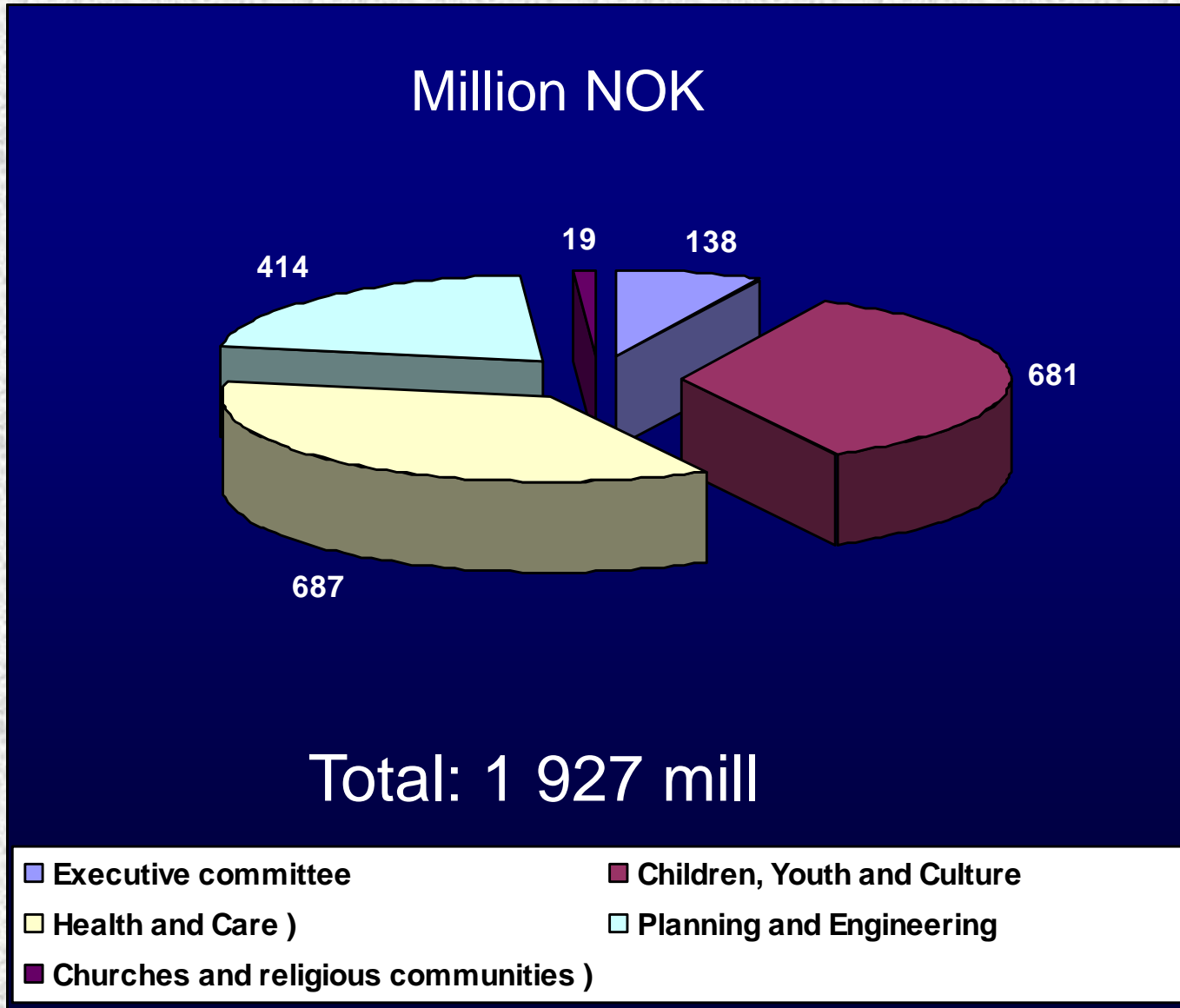
Director of City  
Planning and  
Cultural  
Services

Activity Units

# Chief Executive Officer and his Directors



# Gross expenses in different sectors 2010

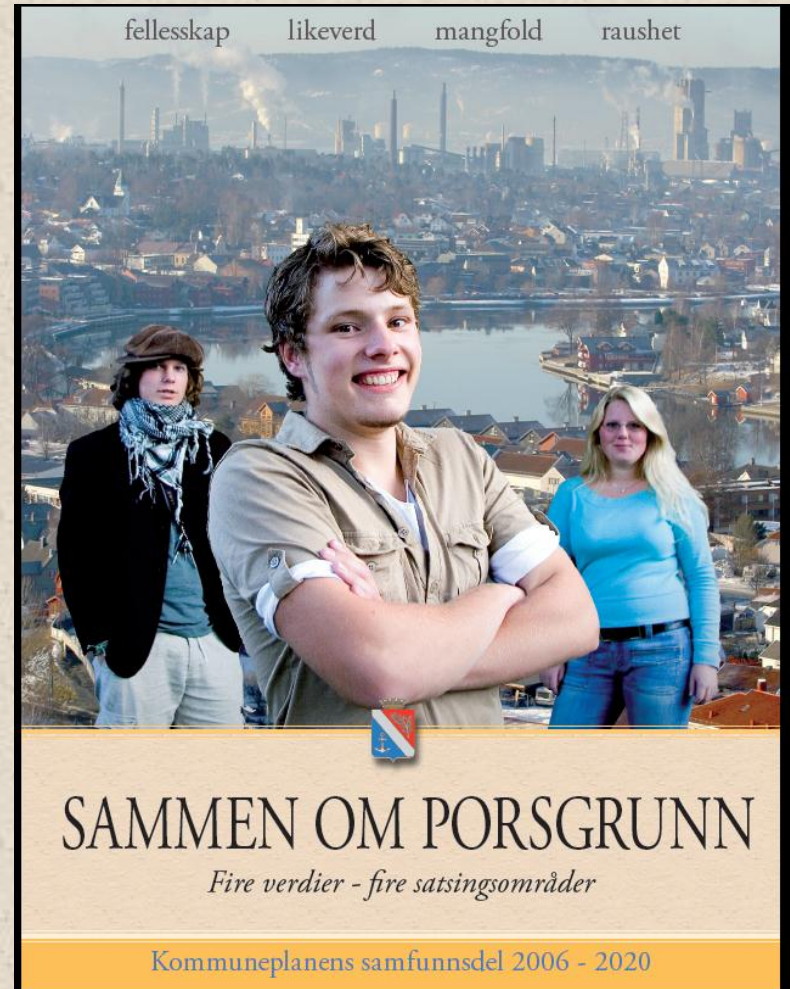




# DEVELOPMENT

## Together for Porsgrunn (Sammen om...)

Co-operation between politicians, city administration, businesses, culture, voluntary organisations, children/youth etc.



# DEVELOPMENT

## Strategies

- Predictability (good planning)
- Art and culture integrated in planning/development

## Many new development projects:

- Bratsberg quay I and II
- The City Hall outdoor arena
- New house for culture and performing arts (2011)
- New schools...



# DEVELOPMENT

**Prepared to meet change**

**Competitive advantages:**

- Well developed industrial infrastructure
- Highly qualified workers
- Many high tech companies
- The region meets all the most important demands from businesses etc



# DEVELOPMENT

## Change:

- PK as facilitator
- Active participant
- Planned development
- Long term planning and predictability
- Infrastructure
- Well functioning local democracy
- Efficiency and quality







# New culture house



# New science center





# Modern industry

